

## How did we test the balls?

To prove to ourselves that a new product performs well enough to offer it to you, we rely on our testing facility.



At the heart of our facility is the Iron Byron swing robot. This machine imitates the golf swing of the late golfing great Byron Nelson, who arguably had the best golf swing of any man ever. The Iron Byron duplicates this *human* swing, every single time.

All during the test we monitor weather conditions gathered from the weather station that sits high above the roof. Wind velocity and direction,



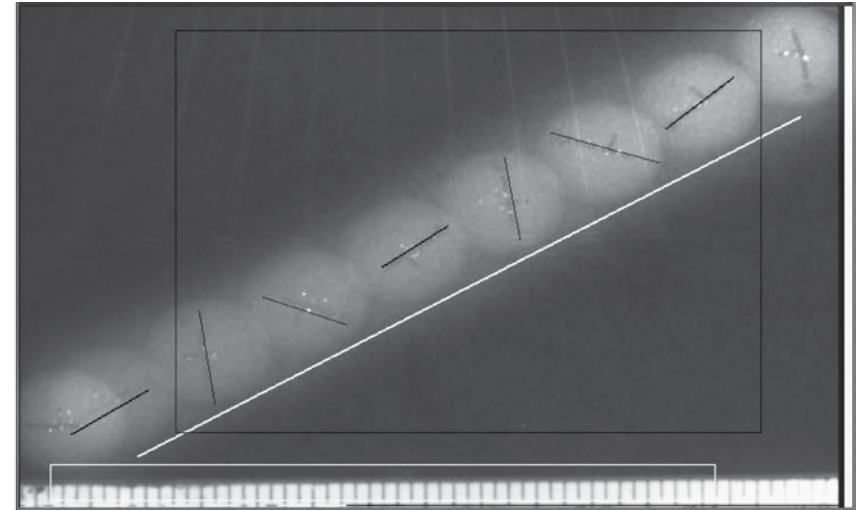
temperature, humidity, and barometric pressure must all be within tight tolerances to continue. If at any time these fall outside the proper range we suspend testing until conditions permit.

The balls are hit down a 320 yard long fairway with yardage markers and field testers with two-way radios who report and record the results for each hit.

The Iron Byron swing robot allowed us to compare the MG Tour C4 performance against the Pro V1 under identical conditions with identical hits. Our measurements included carry distance, total distance, dispersion, and wedge spin rates.

## How we measured spin.

Each tested ball is hit with the testing wedge in the Iron Byron. A high-speed camera takes up to 10 images of the first 10 inches of the ball flight. The image is then computer analyzed with special software and the spin rate, launch angle and ball velocity are calculated.



An actual image that was used in calculating the wedge spin rate of the MG Tour C4.

<b>LaunchAngle:</b>	29.3°
<b>Ball Velocity:</b>	68.2
<b>RPM:</b>	9,911

## T E S T P A R A M E T E R S

Elapsed Time: 25 minutes  
Field Condition: Good

Balls Tested (1 dozen ea.):  
Titleist® Pro V1®  
(3-piece 392 Dimple)  
MG Tour C4 (3-piece 382 Dimple)

### Weather Conditions:

Temperature: 93.8° f  
Humidity: 43%  
Absolute Barometric Pressure:  
29.27 in. Hg  
Wind Speed: 2.8 MPH

### Testing Club Data:

Driver:  
MG Golf S5 10° with True Temper  
Dynamic Gold S400 Shaft  
Center Impact Point  
Clubhead Speed: 98.7 MPH

### Wedge:

Cleveland Golf 588 DSG 56°  
Center Impact Point  
Clubhead Speed: 68.1 MPH